



## Sixth Form Prospectus



Kindness



Collaboration



Curiosity



Respect



Resilience



Endeavour



“ Leaders have fostered a culture in which pupils see these differences as a positive thing ”

Ofsted, 2021

## Contents

- 01. Welcome to RFSS
- 03. Trust Core Values
- 04. Support and Guidance at RFSS
- 06. Pathway for Professionals
- 08. Enrichment at RFSS
- 10. L2 Intermediate Programme
- 12. Choose Your Programme of Study
- 14. The Application Process
- 15. Summary of Courses on Offer
- 16. University Degree Choices
- 17. Entry Requirements for Competitive Courses
- 18. Achieving a Common Goal
- 20. Course Information
- 32 . Useful Information



## Triumph Learning Trust

Triumph Learning Trust is a community where everyone will flourish and succeed through collaboration, innovation and aspiration. Creating together a place where all belong whilst celebrating the unique identity of the school.

### Leadership Culture

Our inspirational leaders build hope and drive improvements, motivating others to feel empowered to take risks and innovate in a culture of kindness, support and togetherness to create schools where all flourish and succeed.

### People Development

Investing in people to develop skills and talent to retain, sustain and grow individuals into the roles of tomorrow.



# Welcome to RFSS

**We are proud to be judged as 'Good' in all areas by Ofsted.** This reflects the tireless work that staff, students and parents and carers have undertaken together in recent years.

Together, we have established a culture of high expectations across the school, supported every step of the way by our Trust. An ambitious culture has been achieved through the development of strong and positive relationships with all stakeholders. Our reflective approach means we are always striving to improve in all that we do and believe that mistakes are only an opportunity to learn.

Mr Iain Green | Headteacher

**The Set For Life programme at Post 16 will also provide students with the wider skills and attributes needed to make a successful transition to adulthood and ensure our students are equipped to be healthy, confident members of society.**





**We strongly believe the Sixth Form at RFSS should serve the young people in our local community.**

As a Sixth Form student with us, we want you to be able to realise your academic potential, whilst developing the personal and social skills which will help you with your life beyond education. We want to ensure you are given excellent support in planning your route beyond Sixth Form education, whether it is to university, apprenticeship or full-time employment.



Sixth Form students at RFSS should strive to become thoughtful, independent and successful learners who are always curious to learn more and develop their passion for their studies. We ask that you give your best to your lessons and to the school, so that through collaboration with staff and peers, you can grow into kind and mature adults, ready to embark on the next exciting chapter of your lives. We recognise that Sixth Form will be full of challenges, and we expect you to show resilience and determination, drawing on support when needed.



We have a wide range of both academic and vocational courses available, including Level 2 and 3 pathways, as well as a specialist high prior attainers programme, designed to help students access the top universities and careers. Students also have access to an extensive pastoral programme which includes tutor time activities, specialist student mentoring, independent study, specialist assemblies and a wide enrichment programme. Both tutor groups and subject classes remain small and therefore give staff the opportunity to entirely focus on you as an individual, and offer any support that you may need. Most students will study 3 subjects at Level 3, as well as having the opportunity to complete AS Level Extended Project Qualification or Core Maths if they wish to.

Please take the time to read all the information in this prospectus and do not hesitate to contact us if you have any questions. We look forward to welcoming your application.

*Mitch Chadwick*

**Mitch Chadwick** | Assistant Headteacher Director of Learning for Sixth Form



“Uniqueness is valued and celebrated”

Ofsted, 2021



## Trust Core Values

**Kindness**  
The quality of friendliness, generosity, consideration, honesty



**Collaboration**  
The belief that working and learning with others will lead to greater success

**Curiosity**  
A strong desire to know and to learn



**Respect**  
To appreciate the importance of understanding and admiration for others and self

**Resilience**  
The ability to recover quickly and learn from the difficulties we face



**Endeavour**  
The belief that hard work is needed to achieve something we can be proud of



## Tutor Time

All students have a Form Tutor who is their daily point of contact. Tutors monitor students' academic and pastoral progress, and will be the first port of call for providing students with support. During daily tutor time, students focus on key areas such as study skills, transition, future career options and health and wellbeing. Study skills are developed by working on the 5 key areas of the VESPA model: Vision, Effort, Systems, Practice and Attitude. Access to UniFrog enables students to explore future study and careers options, while allowing them to prepare for applications processes. We also look to cover topical issues, be they local, national or global, with a focus on discussion and debate. Much emphasis is placed on ensuring students are supported through examination periods and that all students are on the right courses for their prospective career paths.



## Mentoring and Counselling

Students in the Sixth Form have the opportunity to have one-to-one support with our Sixth Form Team. This will help us to identify any potential barriers to learning and offer appropriate support and guidance. Students can book an appointment with a member of the Sixth Form Team or may be referred by their Form Tutor.

## Financial Support

Financial support is available for students who meet the 16–19 Bursary requirements and will be discussed during the interview and induction process.







Kindness

## Career Information Advice and Guidance

Impartial one-to-one careers advice and guidance is available for all students at RFSS through appointments with a Careers Service Adviser. Students will be supported in developing an appropriate career plan and will be required to attend a work experience placement in Year 12. Students will be given advice by their Tutors and the Sixth Form team on education, training and work opportunities, as well as being assisted and advised with applications for universities, apprenticeships or jobs. We offer one-to-one interviews, bespoke Careers Day events for both Year 12 and Year 13 students, careers workshops and access to a range of careers resources and software.



## Support includes:

- Subject mentoring
- Medical Admissions (UKCAT) support
- Interview guidance
- University Masterclasses
- Independent University modules (MOOCs)
- The Extended Project Qualification
- Opportunities to take part in University taster projects

**Students can also take advantage of support to apply for a wide range of external programmes whilst at RFSS Sixth Form including:**

- Social Mobility Foundation
- University of Birmingham A2B Scheme & P2B Scheme
- Coventry University various support projects for students ranging from UCAS, personal statement writing support and student finance advice
- Oxbridge Mentoring
- The Nuffield Foundation Research Placement
- University Masterclasses
- Skills Test support for teaching
- Sutton Trust Summer Schools
- Bath Pathways

“

Pupils feel confident  
'to be themselves'  
at Rugby Free  
Secondary School

Ofsted, 2021

”



## Pathways for Professionals

**The Pathways programme aims to develop a variety of skills including research skills, presentation skills, critical thinking and problem solving.**

Students on this pathway will be invited to participate in an enrichment programme in the Autumn Term which will provide support with University applications and introduce students to access programmes, as well as developing high level study skills. They will also be invited to attend talks from university speakers, and to go on trips to competitive universities, such as Oxford and Cambridge.

Students will be supported with preparing for interviews for courses including all Oxbridge courses, Medicine and programmes with professional accreditation such as Physiotherapy, Occupational Therapy and Nursing. Students on the programme have regular mentoring by the Sixth Form team and access to a variety of additional programmes. We have a wide variety of opportunities available.





## SOCIAL MOBILITY FOUNDATION

The Social Mobility Foundation (SMF) is a charity which aims to make a practical improvement in social mobility for young people from low-income backgrounds. The programme provides opportunities and networks of support for 16 – 17 year olds including internships, residential programmes and one-to-one mentoring from Year 12 through to graduation from university.

Students who meet the entry requirements can apply to take part in one of eleven career sectors (Accountancy, Architecture, Banking and Finance, Biology and Chemistry, Business, Engineering & Physics, Law, Media & Communications, Medicine, Politics, and Technology) through the Social Mobility Foundation's Aspiring Professionals Programme.



The Pathways Programme is an initiative coordinated by the Colleges of the University of Oxford, with support from the Sutton Trust. The programme aims to provide information, advice and guidance on higher education and Oxford to academically able students, and staff members, in non-selective state schools with little history of student progression to Oxford.

All of our events are run in Oxford, and are free to attend.



University of Birmingham Routes to the Professions Programme (Dentistry, Engineering, Finance, Law and Medicine)

The programme offers students a unique opportunity to get a real insight into studying medicine, dentistry, law or finance related courses at the University of Birmingham as well as receiving tailored advice, guidance and support at key points throughout their university application process.

Students join the programme in year 12 and receive a range of support through to year 13 including: careers advice, support with UCAS personal statements, interview preparation, work placement opportunities, mentoring by current undergraduate students, and the opportunity to shadow current students during lectures.



Endeavour



The Nuffield Foundation is a charitable trust established in 1943. Nuffield Research Placements provide over 1,000 students each year with the opportunity to work alongside professional scientists, technologists, engineers and mathematicians on a 4 week research placement during the summer at the end of Year 12.

"Students in the first year of a post-16 science, technology, engineering and maths (STEM) course are eligible to apply. Placements are available across the UK, in universities, commercial companies, voluntary organisations and research institutions.

We particularly encourage students who don't have a family history of going to university or who attend schools in less well-off areas. We make sure no-one is excluded on a financial basis by covering students' travel costs."



The Access to Birmingham (A2B) scheme is designed to help students from families and communities in the West Midlands who have little or no experience of Higher Education to find out about what studying at university involves.

Students who meet the eligibility criteria receive a lower alternative offers to courses at the University of Birmingham on the condition of the successful completion of the A2B module. The A2B offer is typically a reduction of up to two A level grades (eg BBB rather than AAB) or 40 UCAS tariff points. If you pass the A2B module and get the grades needed for your A2B offer or above you will receive a bursary of £1,200 in your first year of study.



Coventry University offer a wide variety of Post-16 Talks relating to Higher Education including Why HE? Researching Universities, the UCAS Process, Student Finance and Budgeting, Personal Statements, Student Life, The CU-Model: Life-shaped Learning and 1 – 1 Personal Statements Checking Support.







Respect

## Enrichment at RFSS

**Employers and universities are not only interested in high grades. They are looking for people who are willing to embrace new challenges, work well with others and have leadership skills.**

At RFSS we run an internal enrichment programme, whereby all students choose an additional activity per term which runs alongside their other subjects, some of which carry additional qualifications. These activities run in blocks for one hour per week. We also encourage students to participate in external enrichment activities outside of school hours. Enrichment experiences allow students to develop characteristics which will enhance their employability skills. Students' commitment to the enrichment programme and their achievements will be referred to an employer and/or university reference, and provide useful evidence in personal statements/ applications.

### Internal Opportunities include:

- Becoming a member of the Sixth Form Student Council
- Becoming a Sixth Form Prefect
- Duke of Edinburgh Award (opportunity to do the gold award in 6th form)
- Extended Project Qualification
- First Aid training
- Mentoring for younger students
- High Prior Attainers' Group
- Spanish for Business
- Social Media Marketing
- Recreational Sport
- Wellbeing Group
- Mental Health Matters
- Equality Club
- Humanities Seminar Group
- Careers Workshops
- Drama
- Oxplore
- Competitive University Admissions

### External Opportunities include:

- NCS: The Challenge
- University Masterclasses and Open Days
- Volunteering (including at Rugby Free Primary School)
- Work Experience
- World challenge trip (or similar)
- Change Your Mind







Endeavour

## L2 Intermediate Programme

**The level 2 programme is a one-year GCSE equivalent course, designed to help students make the transition onto either Level 3 courses at RFSS, or into apprenticeships or other training.**

You are required by law to continue studying GCSE Maths and/or English if you do not achieve a grade 4 or above. If it looks like you are going to achieve less than four GCSEs or equivalent qualifications, including English and Maths, you should carry on studying at Level 2. This does not need to be seen as a bad thing, some students just require slightly longer to fully prepare for Level 3 courses and employment.

The timetable you will follow enables you to achieve the Level 2 qualifications required to progress on to Level 3 courses, whilst building up a portfolio of carefully selected work experience that will compliment or guide your future study pathway. Students will study OCR Cambridge Technical Level 2 in Health and Social Care (equivalent to 3 GCSE's), alongside retaking Maths and English GCSE as required, allowing them to gain up to an additional 5 GCSE's on this one-year programme. Students will then be in the position to progress to A Level study, should they wish to.

There will also be a wide range of extra-curricular activities and enrichment available to you, which will help to boost your CV, as well as helping to build your confidence, skills and experience. Opportunities include:

- **Higher Project Qualification (with progression to extended version if successful)**
- **Academic writing for EAL students enrichment pathway**
- **Work experience placements linked to your chosen career pathway**
- **First Aid**
- **Specialist tutor group and tutor time activities**





# Choose your Programme of Study

**We offer a variety of subjects and qualifications at Level 3 including A-Levels and BTECs and Technical Qualifications. Nearly all universities including competitive universities from the Russell Group accept Level 3 BTECs in relevant subject areas, as being equivalent to A-Level qualifications.**

## Future choices and career aspirations

You need to consider what you would like to do in the future and ensure you have the qualifications needed for your chosen path. The University degree choices table will provide some guidance.

## Enjoyment

Choosing a subject that you like, will mean you will be more motivated to succeed and work hard to achieve your goals.

## Strengths

Your choices should be realistic and suit your particular strengths. The individual course outline will provide you with information about the skills needed for the chosen course. Some subjects require a larger amount of extended writing. Others focus more on problem solving or practical work. It is also vital that you consider how subjects are assessed and whether the methods match your individual strengths.

## Independent Learning

To succeed in your chosen subject, both independent learning and self-discipline are vital. It is recommended that you spend a minimum of 5 hours a week on independent study outside of lessons for each subject you study. This includes revisiting class work and preparing for your next lesson. Subjects with a large amount of coursework or portfolios will require additional preparation, independent study and organisation to meet deadlines. Using your private study periods effectively is critical to your success as a Sixth Form student.

## Entry requirements

You should spend time researching the general and specific entry requirements for our courses. All students are required to have at least a Grade 4 in English and Mathematics at GCSE. Re-sit opportunities in Year 12 may be available providing this is not a requirement for your chosen course. During your Sixth Form interview a number of these issues will be discussed and any additional support or guidance needed will be provided.



## Points to consider when considering which subjects are for you

1

### **Know what you want to study?**

Check out the entry requirements. If you have a university course which you are keen on, have you checked the relevant university website or UCAS course search to find out whether this course requires certain subjects at A-level?

2

### **Not sure yet about your long-term plans?**

Keep your options open! If you are not sure about which course you want to study at university, have you tried to choose at least two facilitating subjects\* which includes Mathematics, English Literature, Physics, Biology, Chemistry, Geography, History, Languages)?

\*This is especially relevant for students hoping to study at one of the Russell Group universities

3

### **GCSEs and other standard level qualifications matter**

Make sure you understand the GCSE or standard level requirements for entry to a competitive university. Are you on track to achieve the GCSE grades to progress onto the course/s that you want to do at A-level and the university course that you may choose to do?

4

### **Think balance**

Do you have a balance of subject choices that reflect your abilities, strengths and interests?

5

### **Make sure you know WHY**

If you want to take a subject that you have not studied before, can you talk for a minute on what this subject is about? Try and unpick why you wish to study this subject. It's not enough to say 'It's interesting', 'I think I'll like it' or 'It will be fun'. Making sure you find out about the course, the way it will be assessed and what it can do for you is critical before making your decisions.

# The Application Process



You can apply to study at RFSS from mid-late November by completing an application form under the Sixth Form tab on our website [www.rugbyfreesecondary.co.uk](http://www.rugbyfreesecondary.co.uk)

You will receive a confirmation message when your application is initially submitted and a letter confirming we have received your application.



If your application indicates you will meet our entry criteria, we will contact you via post and/or email to invite you to an interview. At the interview we will discuss your application and your subject choices. Interviews are allocated on a 'first come, first served' basis, so please do not worry if there is a delay in arranging your appointment.

When you arrive for interview please bring with you a recent reference and report/academic profile with predicted grades from your school or college. We will not be able to make you an offer without a reference. Please note, missed interviews are not routinely re-scheduled unless students get in touch to explain their absence and re-arrange it.



All being well, we will make you a written offer of a conditional place at RFSS. We will ask you to confirm acceptance of the offer by either posting back the acceptance letter or by email/telephone. Failure to confirm acceptance may mean you are putting your place at risk.

All students who receive a conditional offer will be invited for a Sixth Form Induction Programme in July.



We will write to you over the summer term with details about enrolment, which will take place on GCSE results day. It is important that you attend on the date and time you have been given and bring evidence of all GCSE/Level 2 results, including those qualifications taken early.

All courses are offered subject to there being sufficient numbers of applications for financial and educational viability and this cannot be confirmed prior to enrolment in August/September.

# Summary of Courses on Offer

## Level 3 (Post GCSE)

Courses are aimed at students who have achieved a minimum of 5 GCSE 4-9 grades including a minimum Grade 4 in both English and Mathematics.

See subject specific entry requirements and course information for more detail.





## University Degree Choices and Suggested Subject Options

<b>Archaeology</b>	Generally no specific requirements although some prefer Chemistry
<b>Architecture &amp; Building</b>	Mathematics and Physics may be required
<b>Art &amp; Design</b>	Art or Product Design depending on area. Portfolios of work may be required
<b>Audiology</b>	At least one science subject, either Biology, Chemistry, Physics or Mathematics
<b>Biosciences</b>	Two sciences, Chemistry and Biology; BTEC Extended Diploma in Applied Science
<b>Business &amp; Management</b>	Can have Mathematics requirement at GCSE or A-level
<b>Chemistry</b>	Chemistry and another science; BTEC Extended Diploma in Applied Science
<b>Chemical Engineering</b>	Chemistry and Mathematics
<b>Computer Sciences &amp; IT</b>	Mathematics, Computing
<b>Dentistry</b>	Chemistry and usually Biology as a second science
<b>Drama</b>	One from English Literature, Drama
<b>Economics</b>	Economics, Mathematics preferred/required at some universities
<b>English</b>	English Literature
<b>Engineering</b>	Mathematics and Physics
<b>Geography &amp; Environmental</b>	Geography; one or more science subjects required for some courses
<b>History</b>	History (often but not always required)
<b>Law</b>	No specific requirements, although English, History, Classics, Mathematics or a Modern Language is useful
<b>Mathematics</b>	Mathematics
<b>Mechanical Engineering</b>	Mathematics with Mechanics (if no Mechanics – Physics + Chemistry, D & T or Further Mathematics)
<b>Media Studies</b>	English/Film Studies can be useful. Relevant work experience often considered
<b>Medicine</b>	Chemistry plus one of Biology, Physics, Mathematics; Biology often required to at least AS
<b>Modern Languages</b>	Target language almost always required
<b>Music &amp; Music Technology</b>	Music required, audition often required with practical Music grades
<b>Nursing</b>	A science subject (Biology preferred, but Psychology is often accepted). CACHE Extended Diploma in Health and Social Care, BTEC Extended Diploma in Applied Science.
<b>Pharmacology &amp; Pharmacy</b>	Chemistry plus another Science and Mathematics; BTEC National Extended Certificate/ Extended Diploma in Applied Science
<b>Physics</b>	Physics, Mathematics, sometimes Further Mathematics
<b>Physiotherapy</b>	Biology or other science subject or Physical Education
<b>Psychology</b>	Traditional Science subject or Mathematics often required. Often a GCSE Mathematics requirement
<b>Radiography</b>	At least one science subject at A-level, either Biology, Chemistry, Physics or Mathematics or an Extended Diploma in BTEC Applied Science
<b>Sports Science</b>	BTEC Extended Certificate in Sport; Science subjects and Physical Education can be useful
<b>Sports Therapy</b>	BTEC Extended Certificate in Sport; A-level Biology or PE
<b>Veterinary Science</b>	Chemistry, plus one of Biology (preferred), or Physics or Mathematics

## Entry Requirements for Competitive Courses

### Medicine

**Grades:** Students are required to have 3 A-levels including Chemistry and Biology (and be predicted AAA minimum). Students are expected to have achieved at least grade 5 in GCSE in English & Mathematics and grade 7 in Science GCSEs.

**Admissions Testing:** Depending on which Medical School students apply to they will be expected to have taken the UKCAT ([www.ukcat.ac.uk](http://www.ukcat.ac.uk)) or BMAT ([www.admissionstestingservice.org/for-test-takers/bmat](http://www.admissionstestingservice.org/for-test-takers/bmat)).

**Personal Statement:** Use the advice given in school and medical school websites. Students need to reflect on some medical insights and experiences – refer to an Open Day, Medical Conference or Lecture attended, read literature, books or websites, engage with current issues, medical breakthroughs or ethics, observe a doctor/GP.

**Work Experience:** examples – a commitment to caring professions is key – voluntary work in a hospital or care home, with St. John Ambulance, Red Cross or similar organisation. A minimum of 2 weeks is required.

### Midwifery

**Grades:** At GCSE, students are required to have 5 passes at grade 4 or above including, English, Mathematics and one of Biology, Chemistry or Physics or Science Double Award. A typical offer at A-level is ABB in Psychology or Sociology or Biology or CACHE/BTEC Health & Social Care (Distinction/Distinction/Distinction for BTEC).

**Personal Statement:** Students need to demonstrate understanding of the profession, relevant skills, relevant work experience and wider reading of recent news related to Midwifery, Nursing and Healthcare.

**Work Experience:** This needs to be a placement which shows skills in communication, working with people or giving advice and support. More than one week is required and different care related experiences will help show all your skills. Students will be expected to do a literacy and numeracy test as part of the application.

### Pharmacy

**Grades:** At GCSE, students require 5 grade 4 – 9 qualifications including a grade 5 in Mathematics and 4 other passes at minimum grade 4. A-level requirements include at least grade 6 in Chemistry and one further science from Biology, Mathematics or Physics.

**Personal Statement:** Students need to demonstrate excellent communication skills, a commitment to the profession through work experience and skills gained as well as evidence of reading current research.

**Work Experience:** As many weeks as possible in a range of different pharmacies, a hospital, as a Health Care Assistant or a Nuffield Research Placement.

### Nursing

**Grades:** At GCSE students require 5 Grade 4 – 9 results including a Grade 4 in both English & Mathematics. At A-level grades required are BBB with at least one of the qualifications being in Biology, Psychology, Chemistry or Physics, a grade B in CACHE Extended Diploma in Health & Social Care, whilst BTEC Extended Diploma in Applied Science would require at least Distinction/Distinction/Merit results.

**Personal Statement:** Students need to explain why they have chosen nursing and why a particular field of nursing, e.g. adult, child, learning disability or mental health. Experience and explanation of the skills gained in a healthcare environment or even in a non-healthcare environment (e.g. working in a café) where there are time pressures and prioritising involved are important.

**Work Experience:** some suggestions are in hospitals, a Nuffield Research Placement, a voluntary position as a Health Care Assistant or volunteering in a school or nursery.

**A range of relevant work experiences is crucial when applying for these competitive courses!**

For all of the courses on these pages look to complete online University Courses (MOOCs) – these are available through

**[www.futurelearn.com](http://www.futurelearn.com)**

# Achieving a Common Goal

Students get the best out of their time in our Sixth Form through our established three-way partnership between staff, parents/carers and the students themselves.

The Unifrog logo, featuring the word "unifrog" in white lowercase letters on a green circular background.

## Unifrog

We also subscribe to the Unifrog platform which holds the worlds biggest database of Post 18 opportunities. This is utilised to help students to research and discover the different courses and pathways available to them, following leaving the Sixth Form. There are also many activities and resources that are designed to prepare for university courses/apprenticeships/the world of work

The UCAS logo, with the letters "UCAS" in a bold, sans-serif font, where the "A" is stylized with a red and blue design.

## UCAS

UCAS: Students will also have dedicated support with completing their UCAS applications from their specialist mentor, who will also be writing their reference. This begins in the second half of Year 12 and continues all the way through to sending their application off in Year 13. We will also be running trips to several local universities and having speakers in from others to talk about topics such as: preparing for life at university, student finance, choosing the right course, why university and many more.



## Private study

Private study: Students will have access to the Sixth Form Study Zone in their Independent study periods, as well as at break and lunch. This are will provide a quiet, focused study space, with access to ICT and all the resources that students need to be successful. Teachers will be available during independent study sessions to support students with their studies. We believe the effective use of students independent study time is absolutely key in achieving the best possible outcomes at level 3.







Collaboration

## Sixth Form Dress Code

The dress code for all Sixth Form students is smart business wear. As role models for the school all students are expected to dress professionally and promote high standards of personal appearance.

Students should wear either a suit (or smart trousers and blazer jacket), shirt and tie with smart shoes. Or a dress, skirt, full length trousers or cropped trousers with a blazer and smart shoes. Your skirts should be a reasonable length.

All students: Your suit jacket/blazer should be worn at all times around the school site.

Shoes: Shoes should be sensible, smart and clean. No pumps or trainers. No lace up boots. No stiletto heels.

Sportswear: Only to be worn by those study sport on days where there are practical lessons.

All students will be provided with a photo ID badge which should be visibly worn at all times when on school site in support of safeguarding arrangements.





## BTEC LEVEL 3 Applied Sciences

Duration: 2 YEARS

Exam Board: EDEXCEL

This course is ideal if you want to study Science as part of your KS5 choices. There are plenty of practical activities to help develop your understanding of scientific techniques. You will learn to carry out practical laboratory tasks, plan investigations, collect, analyse and present data as well as review and refine the methodology of practical and laboratory-based work. You will also study aspects of Biology, Chemistry and Physics as well as work on your English, Mathematics and IT skills. Training in Science, Technology, Engineering and Mathematics (STEM) is vital in the UK and global economy today and the skills and knowledge you will learn on this course could really get you ahead in the job market. The extended certificate in Applied Science is intended for students who want to continue their education through applied learning and who aim to progress to higher education and ultimately to employment in the Applied Science sector.

### Sixth Form Entry Requirements

5 GCSE Grades 5-9 including a Grade 5 in both Mathematics and English Language. Students are required to have achieved grade 65 in GCSE combined science, or to have grades 6/6/5 if you studied the triple route at GCSE.

## A LEVEL Biology

Duration: A-LEVEL 2 YEARS

Exam Board: AQA

Biology involves the study of a wide range of exciting topics, ranging from molecular biology to the study of ecosystems and microorganisms. Biology is never far from the headlines, whether it's advancements in sequencing the human genome which means finding treatments for many life limiting diseases is closer than ever before, the effects our growing population has on the Earth and the need to manage the conflict between human needs and conservation, as well as our developing understanding of how stem cells become specialised. Biologists are concerned with all these issues and many more. They work in the fields of cell biology, medicine, food production and ecology and the work they do is vital to us all.

### Sixth Form Entry Requirements

5 GCSE Grades 5-9 including a Grade 5 in both Mathematics and English Language. Students are required to achieve a level 6's in both of their combined science examinations. Students studying separate sciences are required to achieve a level 6 in GCSE Biology and complete the Summer Project 'Headstart' and pass the Headstart test in September.

## A LEVEL Chemistry

Duration: A-LEVEL 2 YEARS

Exam Board: AQA

A-level Chemistry can lead you on to a wide range of careers including the in the cosmetics industry, Medicine, Pharmacy, Engineering, Accountancy and Forensics. The course is split into Organic (study of molecules), Inorganic (behaviour of inorganic compounds) and Physical Chemistry. Fancy learning a new language? It is called the IUPAC naming of compounds; names which can get very long indeed! Students on this course will develop a real sense of understanding of scientific techniques through the rigorous practicals, including titrations and preparation of organic molecules. Students will become better equipped at answering some of the biggest questions facing our society today.

### Sixth Form Entry Requirements

5 GCSE Grades 5-9 including a Grade 5 in both Mathematics and English Language. Students are required to achieve a level 6's in both of their combined science examinations. Students studying separate sciences are required to achieve a level 6 in GCSE Chemistry and complete the Summer Project 'Headstart' and pass the Headstart test in September.

## A LEVEL Physics

Duration: A-LEVEL 2 YEARS

Exam Board: AQA

A-level Physics will allow you to appreciate how fundamental science works and to study optional topics including Astrophysics, Medical physics or Applied physics. A-level Physics builds on the concepts and skills developed in the Physics studied at GCSE. Particle physics introduces you to the fundamental properties and nature of matter, radiation and quantum phenomena. The principles and applications of mechanics, materials and waves are also studied. This course provides a foundation for studying a variety of subjects at university including: Engineering, Optometry, Radiography, Medicine and Physics. Physics is also useful for those who want careers in Engineering, Electronics, Meteorology, Astronomy, Space Exploration and Nanotechnology industries. Some of you may even choose to become teachers of Physics!

### Sixth Form Entry Requirements

5 GCSE Grades 4 – 9 including a Grade 5 in both Mathematics and English Language. Students are required to achieve a level 6's in both of their combined science examinations.. Students studying separate sciences are required to achieve a level 6 in GCSE Physics and complete the Summer Project 'Headstart' and pass the Headstart test in September.



## A LEVEL Art and Design

Duration: 2 YEARS

Exam Board: AQA

The Art and Design course will lead to a better understanding of the visual world and provide opportunities for students to develop their own visual language. The introduction to the programme begins with observation of nature: recording, analysis and creation of a visual response to the surroundings. Art makes students look at things anew – even mundane ordinary aspects of the world. There is something magical about smearing pencil and paint across a piece of paper and sculpting form with your hands. Communicating with colour, shape and form awakens the imagination. Art students often arrive at exam season with a significant portion (if not all) of their Art marks accumulated and accounted for. For many students – especially those with a heavy exam load in other subjects or those who struggle with exam anxiety – this advantage is significant.

Sixth Form Entry Requirements: 5 GCSE Grades 4 – 9 including a Grade 5 in both Mathematics and English Language. Ideally grade 5 in GCSE Art and Design and/or GCSE Design and Technology.

## BTEC LEVEL 3 Food Science and Nutrition

Duration: 2 YEARS

Exam Board: WJEC

An understanding of food science and nutrition is relevant to many industries and job roles. Care providers and nutritionists in hospitals use this knowledge, as do sports coaches and fitness instructors. Hotels and restaurants, food manufacturers and government agencies also use this understanding to develop menus, food products and policies that support healthy eating initiatives. Many employment opportunities within the field of food science and nutrition are available to graduates. This is an Applied General qualification. This means it is designed primarily to support learners progressing to university. It has been designed to offer exciting, interesting experiences that focus learning for 16 – 19 year old learners through applied learning, i.e. through the acquisition of knowledge and understanding in purposeful, work-related contexts, linked to the food production industry.

Sixth Form Entry Requirements: 5 GCSE Grades 4 – 9 including a Grade 5 in both Mathematics and English Language. Ideally a grade 5 in Science and Food and Nutrition.

## A LEVEL Product Design

Duration: 2 YEARS

Exam Board: AQA

This creative and thought-provoking qualification gives students the practical skills, theoretical knowledge and confidence to succeed in a number of careers. Especially those in the creative industries. They will investigate historical, social, cultural, environmental and economic influences on design and technology, whilst enjoying opportunities to put their learning in to practice by producing prototypes of their choice. Students will gain a real understanding of what it means to be a designer, alongside the knowledge and skills sought by higher education and employers. This course will enable students to work with and specialise in different metals, woods, polymers and paper and board. The specification content also has links to subjects such as Computer Science, Business Studies, Art and Design and history.

Sixth Form Entry Requirements: 5 GCSE Grades 4 – 9 including a Grade 5 in both Mathematics and English Language. Ideally grade 5 in GCSE Art and Design and/or GCSE Design and Technology. Grade 5 in Science.









## A LEVEL Computer Science

Duration: 2 YEARS

Exam Board: AQA

Computing is the fastest growing sector for employment in the world, with thousands of new job roles being created every year in the UK alone. Studying A level computer science will allow you to study some of the most important areas of computing, such as information representation, communication and internet technologies, hardware, software development, and relational database modelling. This will be taught and assessed through a mixture of theory and practical projects. Once you have finished the course, you will already have the practical skills many employers are looking for in a wide range of different settings including law, medicine, business, politics, and cyber security. There may even be careers waiting for you that don't exist yet

### Sixth Form Entry Requirements

5 GCSE Grades 4 – 9 including a Grade 5 in English Language. Minimum grade 6 in Computer Science. If you have not studied GCSE Computer Science, you must have Grade 7 Maths minimum.

## OCR Cambridge Technical in Digital Media

Duration: 2 YEARS

Exam Board: OCR

The Cambridge Technical in Digital Media has been developed to meet the changing needs of the sector, and prepare students for the challenges they'll face in Higher Education or employment. Designed in collaboration with experts spanning the breadth of the sector, the Cambridge Technical in Digital Media focuses on the skills, knowledge and understanding that today's universities and employers demand. Students will apply practical skills and knowledge in preparation for further study or the workplace.

### Sixth Form Entry Requirements

5 good GCSE's to grade 4 and above.

## A LEVEL Mathematics

Duration: 2 YEARS

Exam Board: EDEXCEL

A qualification in Mathematics holds great prestige and is sought after by many employers, as it develops skills in logic, communication and problem solving. The new A-levels are examined after 2 years over 3 two hour papers which cover Pure/Core Maths and Applied Mathematics (Mechanics/Statistics) in a 2:1 ratio. We use the Oxford A-level Mathematics textbook to cover the content as well as the MEI integral resources, both of which are specific to the Edexcel specification. Students will be assessed throughout the first year in order to provide directed support and will receive formal assessments at regular intervals for reporting.

### Sixth Form Entry Requirements

5 GCSE Grades 4 – 9 including a Grade 5 in both Mathematics and English Language.

## A LEVEL English Literature

Duration: 2 YEARS

Exam Board: AQA

This challenging and engaging course enables students to explore a rich variety of texts across time. The historicist approach taken leads to an in-depth exploration of how literature has developed across the ages, thus extending students' experiences and appreciation of literature. The NEA element allows students to choose their own areas of study, thereby developing their own literary perspectives and voices. This is a highly respected course which will stand students in good stead for further study in a range of subjects

Sixth Form Entry Requirements

5 GCSE at grade 4-9 and a 6 or above in English.

## A LEVEL Drama and Theatre

Duration: 2 YEARS

Exam Board: EDUQAS

WJEC Eduqas A level in Drama and Theatre offers a practical and challenging course of study which encourages students to develop and apply an informed, analytical framework for making, performing, interpreting and understanding drama and theatre.

Sixth Form Entry Requirements

5 GCSE Grades 4 – 9 including a Grade 5 in both Mathematics and English Language.

## A LEVEL English Literature/Language

Duration: 2 YEARS

Exam Board: AQA

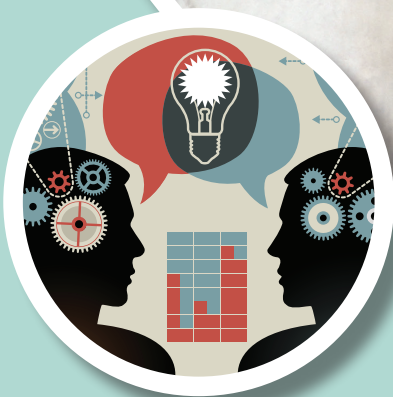
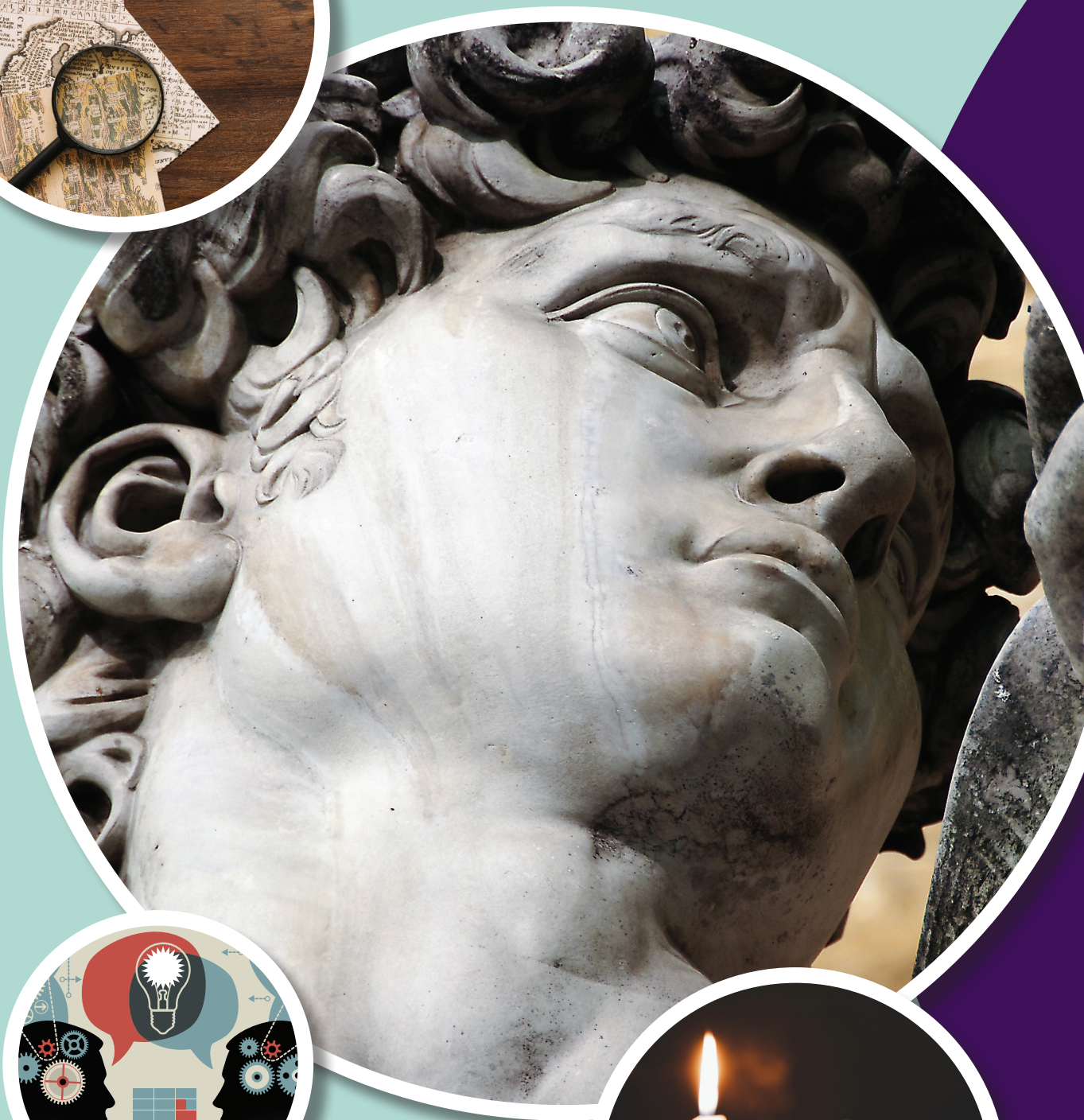
Studying English provides you with the opportunity to develop your reading and analytical skills and build a lifelong love of reading. You'll study a varied selection of different poetry and prose texts, exploring themes, language and structure. You'll develop your critical thinking skills by studying a variety of unseen texts. You will reflect upon the creative process and produce your own original writing, drawing inspiration from the works that you have studied. English as a subject is highly respected and valued by the top universities. It is academically rigorous and that means it's a fantastic introduction to the skills you'll need in higher education.

Sixth Form Entry Requirements

5 GCSE Grades 4 – 9 including a Grade 5 in both Mathematics and English Language.







## A LEVEL Criminology

Duration: 2 YEARS  
Exam Board: WJEC

Criminology explores the Criminal Justice System, investigating how we decide what is criminal, the different types of crime that occur in society and why different people commit crime. The course uses real life case studies that are applied in coursework and exams to gain an understanding of the processes that take place from the crime scene to the courtroom. Students will develop knowledge and skills that will help them to progress in to many careers such as the police service, social work and forensic psychology.

Sixth Form Entry Requirements  
5 GCSE Grades 4 – 9 including a Grade 5 in both Mathematics and English.

## A LEVEL Geography

Duration: 2 YEARS  
Exam Board: AQA

This specification offer an issues-based approach to studying geography, enabling students to explore and evaluate contemporary geographical questions and issues such as the consequences of globalisation, responses to hazards, water insecurity and climate change. It provides a balance between your own physical, human and /or environmental interests, and key geographical topics that provides you with the knowledge, understanding and skills to ready you for further study in higher education – or for employment.

Sixth Form Entry Requirements  
5 GCSE Grades 4 – 9 including a Grade 5 in both Mathematics and English Language. Students must achieve at least a grade 6 at GCSE Level in Geography.

## A LEVEL History

Duration: 2 YEARS  
Exam Board: EDEXCEL

History students are not just limited to 'becoming another History teacher' (unless they want to of course!). Nor are they destined to gather dust in a museum or library (again unless they want to!). It's a universally respected subject because of the challenge it presents, but the challenge is the stimulation. A well rounded education includes an understanding of our past, which continues to inform the present and our future and the units available to study in this qualification combine to provide you with an appreciation of this. By focusing on the history of modern Britain and the USA we can address social, cultural and political themes that have an impact on our lives and the modern world we live in, especially in light of current political debates under a Conservative government where echoes of the Thatcher years still remain strong.

Sixth Form Entry Requirements  
5 GCSE Grades 4 – 9 including a Grade 5 in both Mathematics and English Language. Grade 6 in English and preferably a GCSE in History.

## A LEVEL Psychology

Duration: 2 YEARS  
Exam Board: AQA

What causes aggression? Why do some people have phobias? How does memory work? Why do some people suffer from mental illness? Why do people conform? Psychology looks at questions like these in the study of the human mind and behaviour. It is a science with cutting edge research that has real world applications to issues in everyday life, ranging from criminal justice, relationships, medical treatments to social change.

Sixth Form Entry Requirements  
5 GCSE Grades 4 – 9 including a Grade 6 in both Mathematics and English Language.

## A LEVEL Sociology

Duration: 2 YEARS  
Exam Board: AQA

Sociology enables you to focus on your personal identity, roles and responsibilities within society and to develop a lifelong interest in the social issues that affect us on a daily basis. Who holds power? Why is this? Why do inequalities exist? Is society truly fair and, are we really, as the Universal Declaration of Human Rights declares, all born free and equal?

Sixth Form Entry Requirements  
5 GCSE Grades 4 – 9 including a Grade 6 in both Mathematics and English Language.

## A LEVEL Philosophy & Ethics

Duration: 2 YEARS  
Exam Board: AQA

A-Level Philosophy and Ethics is a course aimed at students who want to develop their analytical and critical thinking skills, as well as asking questions about the world we live in. From ethical conundrums to debates around the nature of knowledge, religion and the mind itself, students will be presented with engaging texts from a variety of viewpoints, and will become adept at using these to articulate their own worldview.

Sixth Form Entry Requirements  
5 GCSE Grades 4 – 9 including a Grade 6 in English Language.

## BTEC LEVEL 3 Health and Social Care

Duration: 2 YEARS

Exam Board: Pearson

Health and Social Care is a relevant current topic that is always making the headlines to the world today. You will get the opportunity to apply different strategies of effective communication to a health or social care role play. In addition, you will have an understanding of the various roles and responsibilities of the health care professional when empowering individuals in the health and social care sector. This CACHE qualification has been developed in the health and social care sector to give you the opportunity to enter employment in the health and social care sector or to move on to Higher Education and progression into a wide range of roles within the health and social care sector.

Sixth Form Entry Requirements

5 GCSE Grades 4 – 9 including a Grade 5 in both Mathematics and English Language.

## OCR Cambridge Technical Sport Level 3

Duration:

2

YEARS

Exam Board: OCR

On this course you will look at a variety of different areas of the sports world. You will look into coaching and leadership, why are the like of Pep Guardiola, Jurgen Klopp, Hope Powell and Eddie Jones so successful and respected? Further to this you will look into the body and how it works, biomechanics of movement, organising sports, and many more areas such as Psychology and practical skills. This is a brilliant course to set students up for university or other types of further education.

Sixth Form Entry Requirements

5 GCSE Grades 4 – 9 including a Grade 5 in both Mathematics and English Language. Preferably studied before to Level 2 merit.





## Useful Information

Rugby Free Secondary School  
Anderson Avenue  
Rugby  
CV22 5PE



**01788 222060**



**info@rugbyfreesecondary.co.uk**



**rugbyfreesecondary.co.uk**

### Opening hours:

**Mon – Fri: 8am – 5pm**

**Sat – Sun: CLOSED**



follow us on:



Twitter

**@RugbyFSS**



Facebook

**facebook.com/  
RugbyFreeSecondarySchool**



Instagram

**rfss\_official**









Rugby Free  
Secondary School

Anderson Avenue  
Rugby, CV22 5PE

Tel: 01788 222060 / 01788 222881

Email: [info@rugbyfreesecondary.co.uk](mailto:info@rugbyfreesecondary.co.uk)

[www.rugbyfreesecondary.co.uk](http://www.rugbyfreesecondary.co.uk)